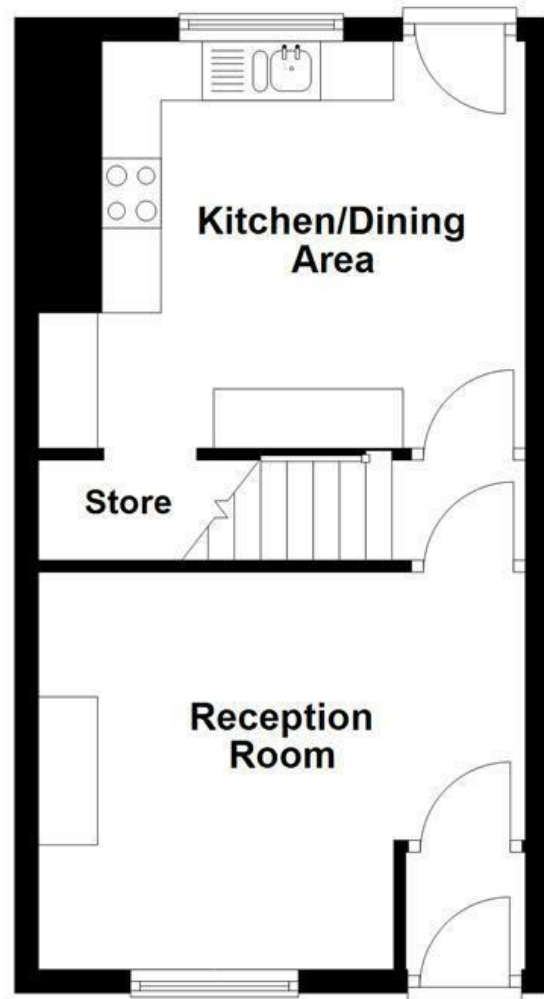
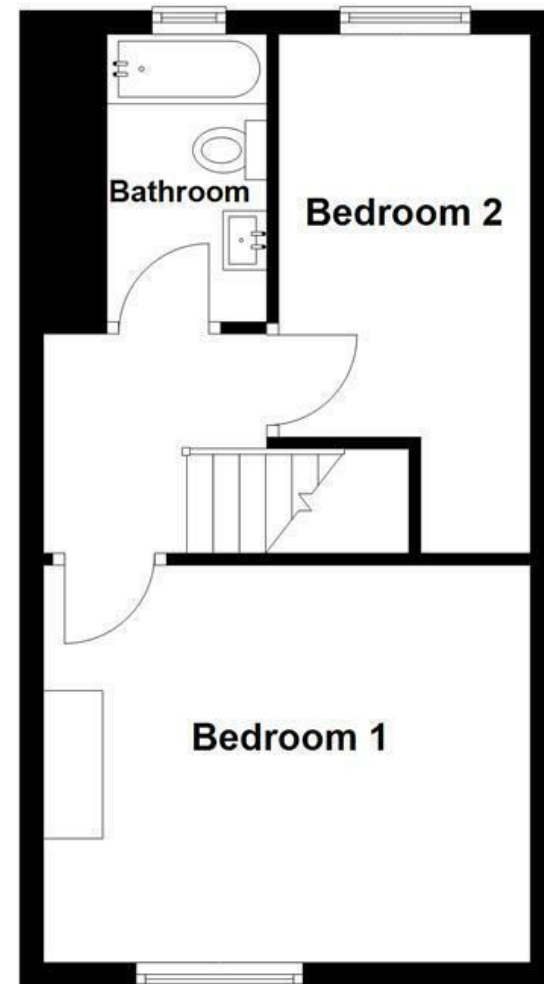


Ground Floor



First Floor



Energy Efficiency Rating		
	Current	Potential
Very energy efficient - lower running costs		
(92 plus) A		87
(81-91) B		
(69-80) C		
(55-68) D		
(39-54) E		
(21-38) F		73
(1-20) G		
Not energy efficient - higher running costs		
England & Wales	EU Directive 2002/91/EC	

These particulars, whilst believed to be accurate are set out as a general outline only for guidance and do not constitute any part of an offer or contract. Intending purchasers should not rely on them as statements of representation of fact, but must satisfy themselves by inspection or otherwise as to their accuracy. No person in this firm's employment has the authority to make or give any representation or warranty in respect of the property.

Brighton Street, Bury, BL9 6DB

£170,000

STUNNING MID TERRACE HOME - SOLD WITH NO ONWARD CHAIN WITH FURNISHINGS INCLUDED

Nestled in the heart of Bury, this charming terraced house on Brighton Street offers a delightful blend of comfort and convenience. With two well-proportioned bedrooms, this property is ideal for small families, couples, or individuals seeking a cosy retreat. The inviting reception room provides a warm and welcoming space, perfect for relaxation or entertaining guests.

The house features a practical bathroom, ensuring that daily routines are both comfortable and efficient. The layout of the property maximises space, creating a homely atmosphere that is both functional and appealing.

Brighton Street is situated in a vibrant community, with local amenities, shops, and parks just a stone's throw away. The area boasts excellent transport links, making it easy to explore the wider region or commute to nearby towns and cities.

This terraced house presents an excellent opportunity for those looking to establish themselves in a friendly neighbourhood while enjoying the benefits of modern living. Whether you are a first-time buyer or seeking a rental property, this home is sure to impress with its character and practicality. Don't miss the chance to make this lovely house your new home.

For the latest upcoming properties, make sure you are following our Instagram @keenans.ea and Facebook @keenansestateagents

Brighton Street, Bury, BL9 6DB
£170,000

 2  1  1  C

- Beautifully Presented Mid Terrace Property
 - Contemporary Fitted Dining Kitchen
 - On Street Parking
 - EPC Rating C
- Sold with No Onward Chain
 - Stylish Decoration Throughout
 - Tenure Leasehold
- Three Piece Bathroom Suite
 - Spacious Rear Yard with Outbuilding
 - Council Tax Band A

Ground Floor

Entrance Vestibule

3'4 x 3'3 (1.02m x 0.99m)
UPVC double glazed frosted front door, tiled effect flooring and door to reception room.

Reception Room

13'6 x 11'0 (4.11m x 3.35m)
UPVC double glazed window, central heating radiator, coving, wall mounted remote electric fire, television point, wood effect flooring and door to inner hall.

Inner Hall

Door to kitchen/dining area and stairs to first floor.

Kitchen/Dining Area

13'6 x 11'3 (4.11m x 3.43m)
UPVC double glazed window, central heating radiator, spotlights, range of wall and base units with wood effect work surfaces, tiled splashback, stainless steel one and a half bowl sink and drainer with mixer tap, integrated oven with four ring gas hob and extractor hood, space for fridge, integrated dishwasher, plumbing for washing machine, PVC panelling to ceiling, spotlights, wood effect flooring, open to understairs storage and UPVC door to rear.

Landing

Doors leading to two bedrooms and bathroom.

Bedroom One

13'6 x 11'2 (4.11m x 3.40m)
UPVC double glazed window and central heating radiator.

Bedroom Two

14'3 x 7'5 (4.34m x 2.26m)
UPVC double glazed window, central heating radiator, loft access and wood effect flooring.

Bathroom

8'0 x 4'5 (2.44m x 1.35m)
UPVC double glazed frosted window, central heated towel rail, vanity top wash basin with mixer tap, dual flush WC, panel bath with mixer tap and overhead direct feed rainfall shower with rinse head, spotlights and wood effect flooring.

External

Rear

Enclosed yard with Indian stone paving, outbuilding and gate to shared access.

Outbuilding

18'7 x 9'4 (5.66m x 2.84m)

